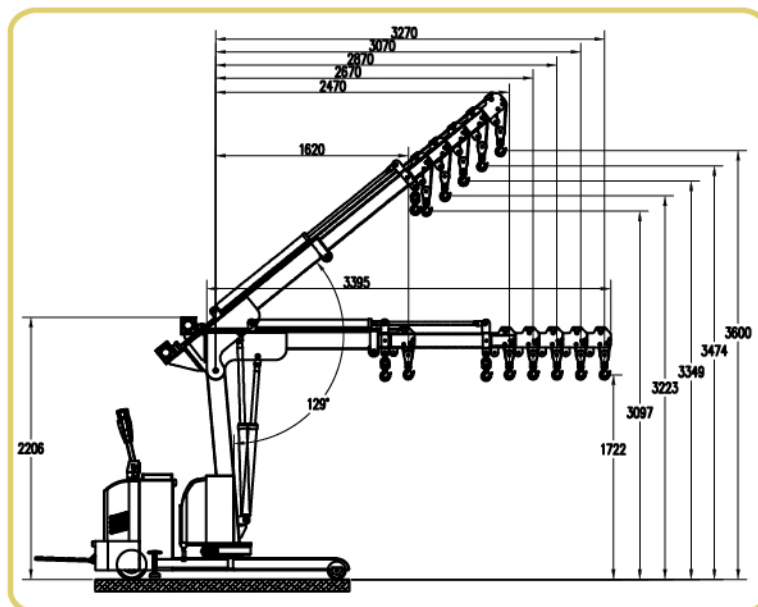


Electric Shop Crane FEC1000

- ▲ High-power reversing switch, integrated hydraulic pump;
- ▲ Man machine integrated multi-function control handle, traveling steeples governor;
- ▲ Shop cranes have 3 position design, wide lifting range, the second position can easy to adjust the arm distance through the cylinder;
- ▲ The hook can be controlled up and down by remote control;
- ▲ Manned pedal can move crane easily;
- ▲ It has two outriggers to ensure the safety of product operation.



FEC1000



i-Lift No.		2340401					
Model		FEC1000					
Jib length	mm(in.)	1620(63.8)	2470(97.2)	2670(105.1)	2870(113)	3070(120.9)	3270(128.7)
Rated capacity	kg(lb.)	1000(2200)	650(1430)	562.5(1237.5)	475(1045)	387.5(852.5)	300(660)
Jib rotation angle		±60°					
Max climbing ability		5°					
Turning radius	mm(in.)	2150(84.6)					
Overall width of leg	mm(in.)	852(33.5)					
Front wheel	mm(in.)	Φ150x50(Φ5.9x1.97)					
Rear wheel	mm(in.)	Φ250x80(Φ9.8x3.15)					
Brake		Electromagnetic braking					
Power of driving motor		1.2 kw					
Power of lifting motor		2.2 kw					
Battery	V/Ah	24/210					
Charger	V/A	24/30					
Cable length	mm(in.)	10(0.4)					
Closed dimension LxWxH	mm(in.)	2200×1100×2155(86.6x43.3x84.8)					
Net weight	kg(lb.)	1070(2354)					