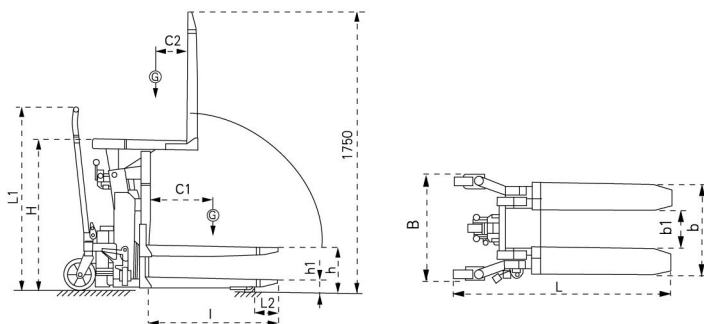
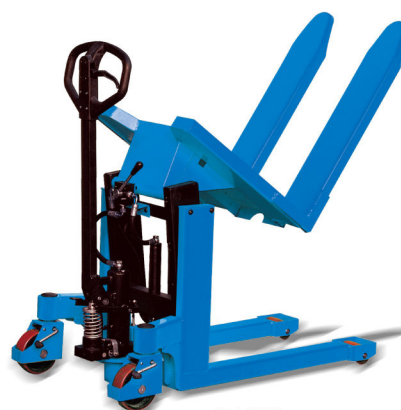


## Pallet Tilter LT series

- ▲ Designed to allow the user to ergonomically reach loads easily without having to bend down or over-stretch.
- ▲ Handle can be turned and locked in position away from the work area.
- ▲ Applies to both sitting and standing positions.
- ▲ Forks can be tilted up to 90°.
- ▲ Both are supplied as standard with parking brake and foot protectors.
- ▲ **Conforms to EN1757-1 and EN 1175.**



i-Lift No.		1520902	1520903
Model		LT10M	LT10E
Type		Manual	Electric
Capacity	(kg)(lb.)	1000 (2200)	
Lifting Height, Vertical	h (mm)(in.)	285 (11.2)	
Min. Fork Height	h1 (mm)(in.)	85 (3.3)	
Fork Length	l (mm)(in.)	800 (31.5)	
Handle Height	L1 (mm)(in.)	1138 (44.8)	
Overall Fork Width	b (mm)(in.)	560 (22)	
Width Between Forks	b1 (mm)(in.)	234 (9.2)	
Fork Tip Length from Roller	L2 (mm)(in.)	135 (5.3)	
Overall Width	B (mm)(in.)	638 (25.1)	
Overall Length	L (mm)(in.)	1325 (52.2)	1410 (55.5)
Overall Height, Raised	H (mm)(in.)	950 (37.4)	
Overall Height, Lowered	H (mm)(in.)	750 (29.5)	
Load Centre Min. /Max.	C1 (mm) (in.)	200/400 (8/16)	
Load Centre Min. /Max.	C2 (mm) (in.)	200/420 (8/16.5)	
Power Unit	(KW/V)	—	0.8/12
Net Weight	(kg)(lb.)	178 (391.6)	185 (407)



LT10M

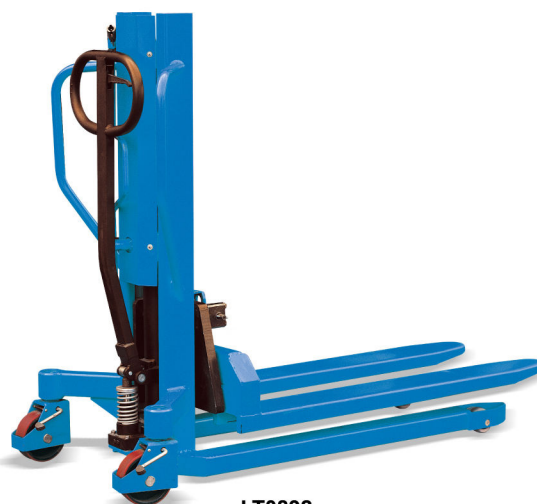


LT10E

## Lateral Pallet Tilter LT

- ▲ Designed to allow the user to ergonomically reach loads easily without having to bend down or over-stretch.
- ▲ Forks can be tilted up to 20° both left and right sides by thread.
- ▲ Supplied as standard with parking brake and foot protectors.
- ▲ **Conforms to EN1757-1.**

i-Lift No.		1520901
Model		LT0892
Capacity	(kg)(lb.)	800 (1760)
Max. Fork Height	(mm)(in.)	920 (36.2)
Min. Fork Height	(mm)(in.)	88 (3.5)
Fork Length	(mm)(in.)	1150 (45.3)
Fork Width	(mm)(in.)	150 (6)
Width Over Forks	(mm)(in.)	540 (21.3)
Tiltable degree	(in.)	Left or right 20°
Net Weight	(kg)(lb.)	210 (462)



LT0892