

Stainless Pallet Trucks HPS series

- ▲ All parts are made of stainless #316 including hydraulic pump, fork frame, handle, push rod, bearing, pin and bolt, etc.
- ▲ For use in meat and other food industry, dairy canning and all areas where corrosive acids and saline solutions are used.
- ▲ Rollers/Wheels: Nylon.
75mm (3") lowered fork height available.
- ▲ **Conforms to EN1757-2.**



HPS20S

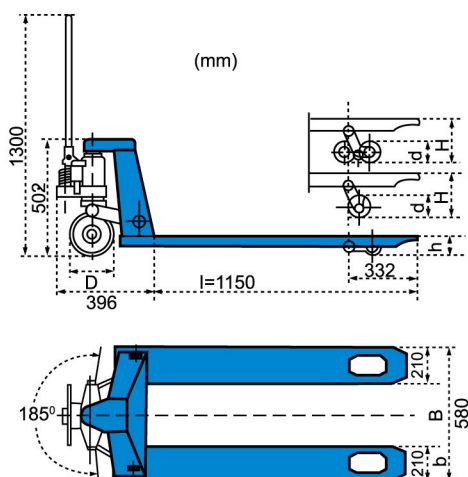
i-Lift No.		1110905	1110906
Model		HPS20S	HPS20L
Capacity	kg(lb.)	2000(4400)	
Min.Fork Height	mm(in.)	85(3.3)	
Max.Fork Height	mm(in.)	205(8.1)	
Fork Length	mm(in.)	1150(45.3)	1220(48)
Fork Width	mm(in.)	160(6.3)	
Fork Overall Width	mm(in.)	540(21.3)	680(27)
Net Weight	kg(lb.)	75(165)	78(171.6)

5 tonne Pallet Truck HP50S

- ▲ Heavy duty design for moving heavy load.
- ▲ Unique hydraulic pump with less effort to lift heavy load easily.
- ▲ **Conforms to CE safety standard.**



Load roller: d=Φ80×68mm, tandem steel
Steering wheel: D=Φ200×50mm, steel



i-Lift No.		1111001
Model		HP50S
Capacity	kg(lb.)	5000(11000)
Max. Fork Height	H (mm)(in.)	200(8)
Min. Fork Height	h (mm)(in.)	90(3.5)
Fork Length	l (mm)(in.)	1150(45.3)
Fork Overall Width	B (mm)(in.)	580(22.8)
Fork Width	b (mm)(in.)	210(8.3)
Over Size	L×W×H (mm)(in.)	1546×588×1300(60.8×23.1×51.2)
Net Weight	kg(lb.)	192