

# Full Electric Hydraulic Lifting Crane FEC450

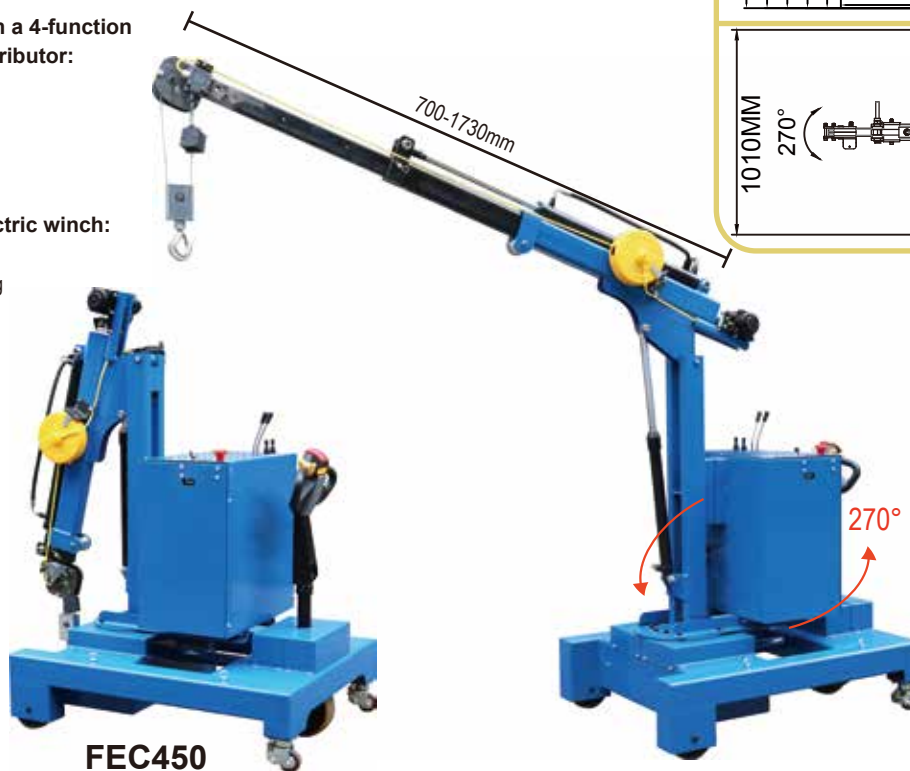
- ▲ FEC450 is a heavy-duty counterbalanced powered drive workshop crane (built-in ballast weights), with a 270° pivoting arm, suitable for lifting loads up to 450 kg in line with safety international standards.
- ▲ Equipped electric winch for lifting and lowering.
- ▲ Electric Drive Wheel.
- ▲ In case of fragile loads or awkward placements, lowering speed can be reduced through a knob.
- ▲ Lifting system is fitted with a security valve that prevents overloading and eliminates the risk of machine overturning in every position of its 270° rotation.

## Equipped with a 4-function hydraulic distributor:

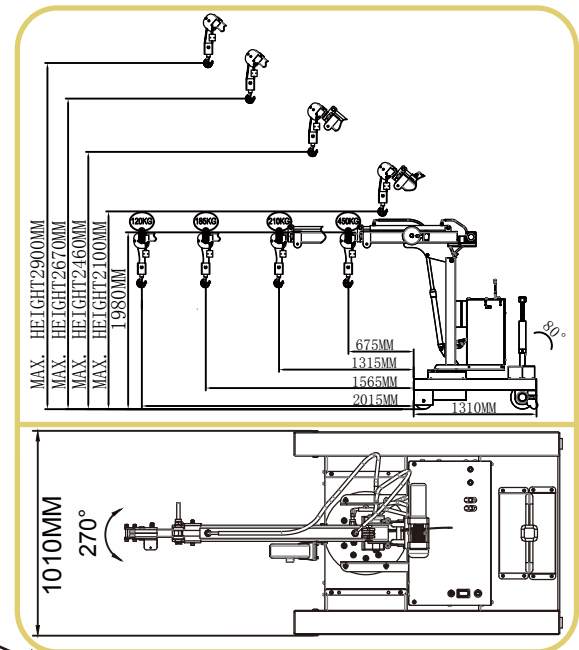
- ▲ jib lifting
- ▲ jib lowering
- ▲ jib extension
- ▲ jib retraction

## Equipped electric winch:

- ▲ goods lift
- ▲ goods lowering



**FEC450**



|   |                  |                              |            |            |             |             |
|---|------------------|------------------------------|------------|------------|-------------|-------------|
| i-Lift No.  | 2340301          |                              |            |            |             |             |
| Model   | FEC450           |                              |            |            |             |             |
| Hoist lifting method  | Electric Lifting |                              |            |            |             |             |
| Max. load per gear  | kg(lb.)          | 450(990)                     | 210(462)   | 185(407)   | 145(319)    | 120(264)    |
| Max. hook height per gear                                       | mm(in.)          | 1960(77.2)                   | 2420(95.3) | 2560(100)  | 2710(100.7) | 2840(111.8) |
| Hook to front distance per gear when the hook highest           | mm(in.)          | 700(27.6)                    | 1160(45.7) | 1350(53.1) | 1570(61.8)  | 1730(68.1)  |
| Hook height when the hoist arm in a horizontal state            | mm(in.)          | 1340(52.8)                   |            |            |             |             |
| Hook to front distance when the hoist arm in a horizontal state | mm(in.)          | 665(25.8)                    | 1035(40.7) | 1555(61.2) | 1805(71)    | 2005(80)    |
| Max. the hoist arm length per gear                              | mm(in.)          | 1070(42)                     | 1710(67.3) | 1960(77.2) | 2210(87)    | 2410(94.9)  |
| Body size: L×W×H  | mm(in.)          | 1310x1010x1910(51.6x40x75.2) |            |            |             |             |
| Max. rotation angle   |                  | 270°                         |            |            |             |             |
| Max. radius of rotaion  | mm(in.)          | 2410(95)                     |            |            |             |             |
| Min. radius of rotaion  | mm(in.)          | 1070(42)                     |            |            |             |             |
| Caster diameter (PU)  | mm(in.)          | Φ180(7)/Φ250(10)             |            |            |             |             |
| Driving wheel power   |                  | 0.7kw                        |            |            |             |             |
| Driving wheel size  | mm(in.)          | 250x80(10x3.1)               |            |            |             |             |
| Battery   | V/ah             | 12/80x2                      |            |            |             |             |
| Charger   | V/A              | 24/15                        |            |            |             |             |
| Net Weight  | kg(lb.)          | 1204(2648.8)                 |            |            |             |             |