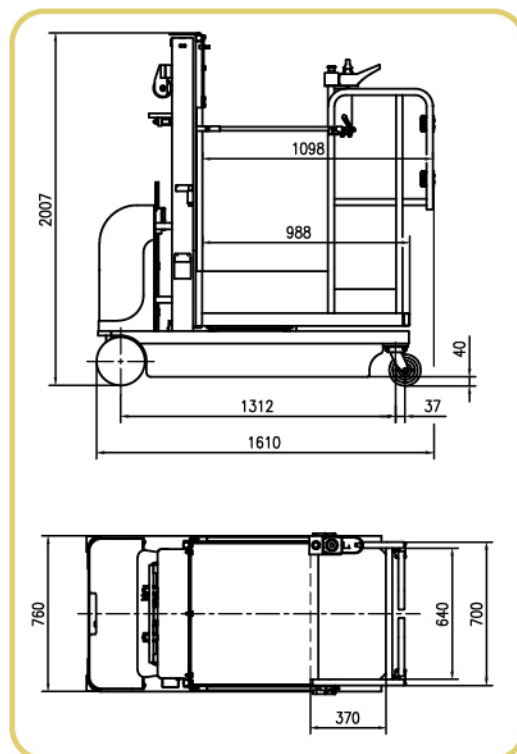


Order Picker AMPD series

- ▲ Proportional controls made in UK.
- ▲ Self-closing gate on platform
- ▲ Drivable at full height
- ▲ Non-marking tyre
- ▲ 2WD
- ▲ Automatic brake system
- ▲ Emergency lowering system
- ▲ Emergency stop button
- ▲ Cylinder holding valve
- ▲ Onboard diagnostic system
- ▲ Tilt sensor with alarm
- ▲ Horn
- ▲ Forklift pockets
- ▲ Charger protection
- ▲ Option: traction battery



AMPD345

i-lift No.		2422101	2422102	2422103
Model		AMPD335	AMPD340	AMPD345
Capacity	kg(lbs)	300(660)		
Max. Occupants		1		
Working Height	mm(inch)	5500(216.5)	6000(236.2)	6500(256)
Platform Floor Height	mm(inch)	3500(137.8)	4000(157.5)	4450(175.2)
Ground Clearance	mm(inch)	40(1.6)		
Wheel Base	mm(inch)	1312(51.7)		
Platform Size LxW	mm(inch)	600x700(23.6x27.6)		
Overall Length	mm(inch)	1610(63.4)		
Overall Width	mm(inch)	760(30)		
Overall Height	mm(inch)	2230(87.8)	1840(72.4)	2007(79)
Max. Travel Speed(Stowed)	km/h	4		
Max. Travel Speed(Raised)	km/h	1.1		
Min. Turning Radius	mm(inch)	0		
Gradeability	%	25		
Maximum Slope	°	1.50°		
Tyres(Drive Wheels)	mm(inch)	Φ230x80(9x3)		
Tyres(Front Wheels)	mm(inch)	Φ150x40(6x1.5)		
Driving Motor	V/kw	2x24/0.4		
Lifting Motor	V/kw	24/1.6		
Up/Down Speed(without loading)	s	12/34	14/37	16/40
Up/Down Speed(with full loading)	s	17/32	20/35	23/38
Battery	V/Ah	2x12/100		
Integrated Charger	V/A	24/15		
Net Weight	kg(lbs)	470(1034)	675(1485)	685(1507)



AMPD345