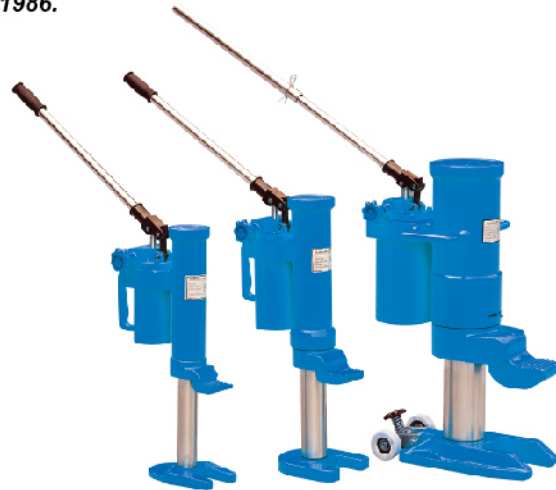
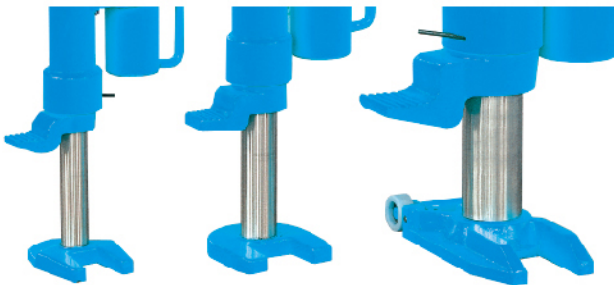
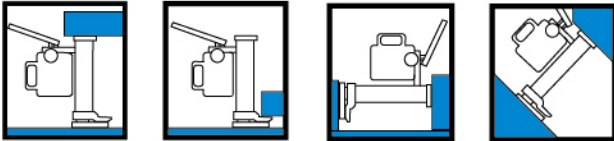


## Hydraulic Jack HMR series

i-LIFT hydraulic jacks for repairs, maintenance and installation of heavy machines

- Compact and stable construction.
- Can be used in any position.
- Housing revolves 360 degrees.
- Lowering speed can be accurately adjusted.
- Protected against overloading.
- Pump lever is removable.
- **According to CE and US standard USA ASME/ANSI B30.1.1986.**



HM50R

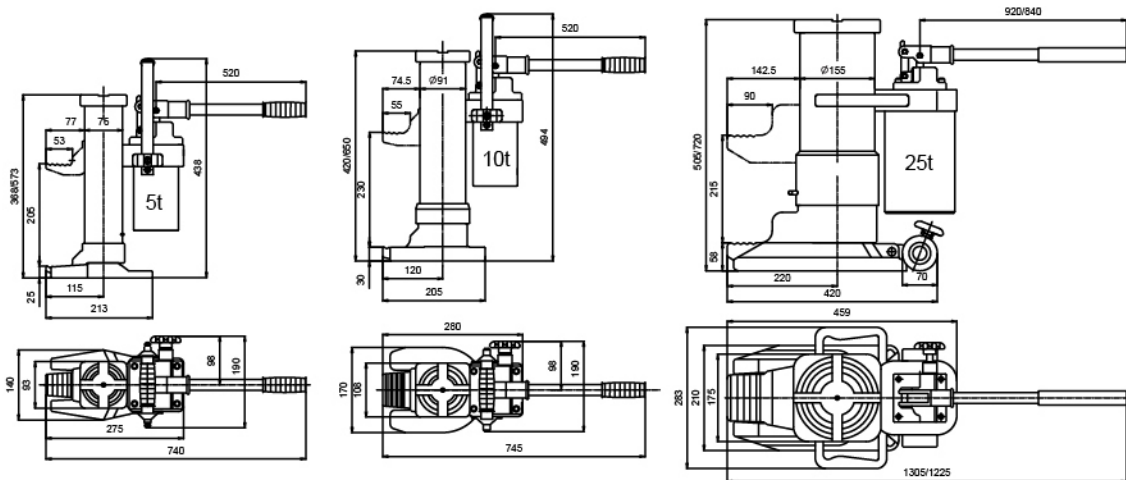
HM100R

HM250R

### CAUTIONS

**To avoid possible personal injury or damage to equipment**

- Do not exceed the maximum load capacity of the jack.
- Do not add additional load to a lifted load.
- Do not use in unstable or hazardous positions.
- Unit must be used on flat surfaces able to carry the load.
- The load must be stable during lifting.
- An unstable load may cause the jack or load to slip.
- Do not use jack(s) if damaged, altered or in poor condition.
- Do not lift people or loads with people on or underneath them.
- Do not lift at the end of the toe. Fully engage the load with the toe.



i-Lift No.		2311101	2311102	2311103
Type		HM50R	HM100R	HM250R
Capacity	kg(lb.)	5000(11000)	10000(22000)	25000(55000)
Lifting Range of Foot	mm(in.)	25-230(1-9)	30-260(1.2-10.2)	58-273(2.3-10.7)
Lifting Range of Head	mm(in.)	368-573(14.5-22.6)	420-650(16.5-25.6)	505-720(20-28.3)
Max. Lever Force	kg(lb.)	38(83.6)	40(88)	
Net Weight	kg(lb.)	25(55)	35(77)	102(224.4)